

American Nonprofit EO  
Historical Summary Analysis  
as of September 14, 2015  
(ANSA30)

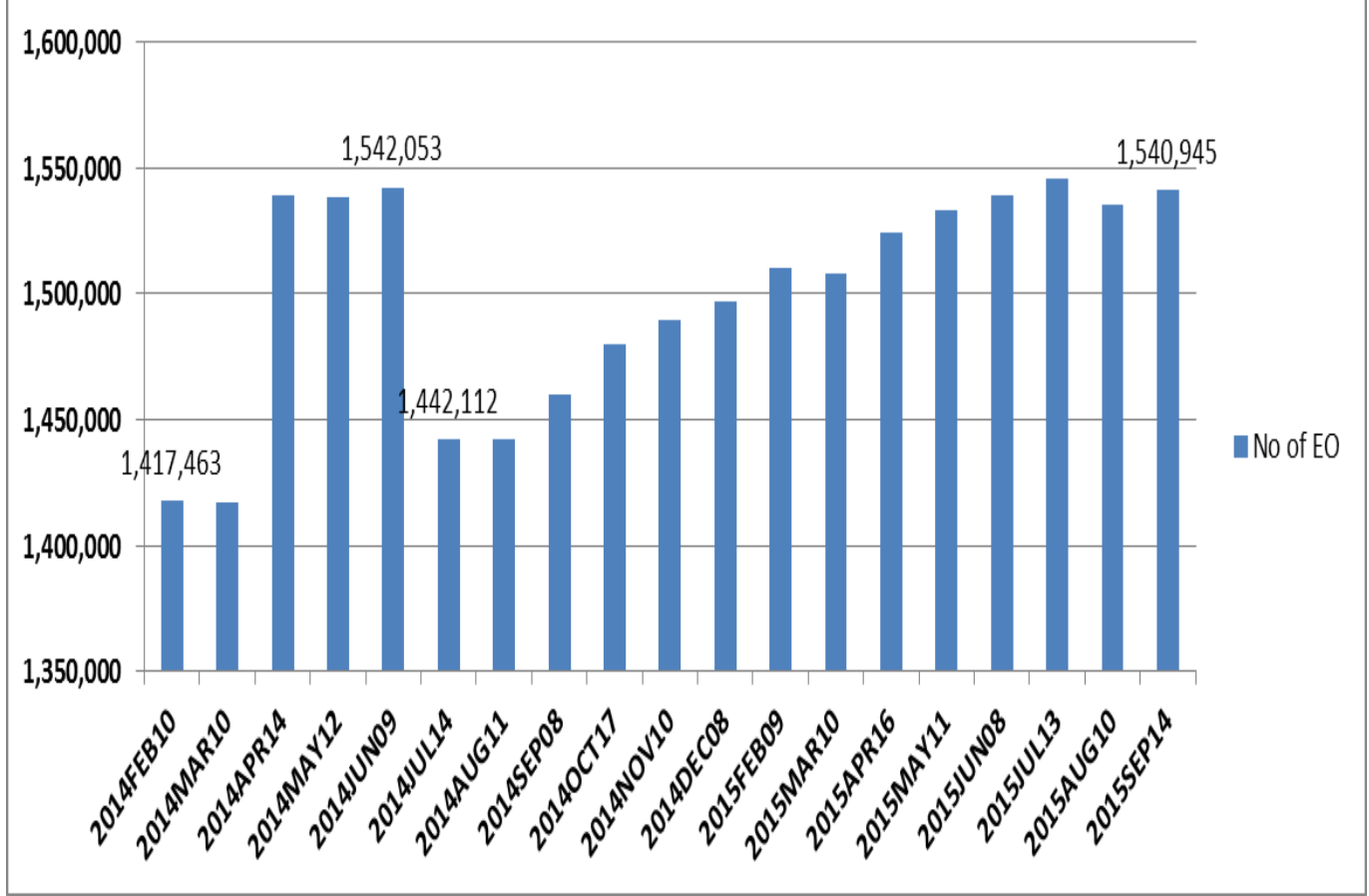
*September 14, 2015*  
*Prepared by David Yoo*

***Mission:*** *This newsletter is free and open to share nonprofit information with the nonprofit workers and nonprofit researchers who are engaged in the nonprofit projects for industry, community, university and government.*

# 1) USA National Nonprofit EO Financial Historical Summary by IRS Post Month in 2014 & 2015

<b>Post Month</b>	<b>No of EO</b>	<b>Income Amount</b>	<b>Revenue Amount</b>	<b>Asset Amount</b>
2014FEB10	1,417,463	\$3,606,985,001,327	\$2,137,479,443,605	\$5,074,408,381,684
2014MAR10	1,417,341	\$3,579,873,405,567	\$2,144,543,905,906	\$5,124,204,148,791
2014APR14	1,538,860	\$3,629,375,304,043	\$2,183,448,396,877	\$8,596,272,331,906
2014MAY12	1,538,313	\$3,624,345,251,904	\$2,179,982,362,242	\$7,953,968,225,689
2014JUN09	1,542,053	\$3,684,572,088,177	\$2,208,403,300,958	\$8,186,011,806,584
2014JUL14	1,442,112	\$3,653,764,308,051	\$2,183,465,649,761	\$5,107,102,610,306
2014AUG11	1,442,282	\$3,370,621,116,115	\$2,190,858,313,335	\$5,065,790,465,285
2014SEP08	1,459,813	\$3,399,512,466,782	\$2,200,415,653,113	\$5,089,217,051,560
2014OCT17	1,480,141	\$3,452,785,611,147	\$2,222,643,371,095	\$5,212,610,206,734
2014NOV10	1,489,164	\$3,477,539,787,852	\$2,222,243,565,827	\$5,217,679,829,294
2014DEC08	1,497,172	\$3,696,846,246,530	\$2,225,591,650,429	\$5,378,486,276,365
2015FEB09	1,510,115	\$3,663,035,317,788	\$2,207,916,970,297	\$5,320,388,445,934
2015MAR10	1,508,150	\$3,726,606,372,196	\$2,232,273,876,147	\$5,448,151,325,952
2015APR16	1,523,959	\$3,734,067,627,348	\$2,240,263,089,711	\$5,467,686,327,353
2015MAY11	1,532,722	\$3,756,228,077,253	\$2,245,454,494,232	\$5,476,212,177,030
2015JUN08	1,538,881	\$3,805,539,636,122	\$2,285,062,374,898	\$5,564,332,036,102
2015JUL13	1,545,625	\$3,770,734,575,469	\$2,264,473,872,782	\$5,495,018,929,950
2015AUG10	1,535,234	\$3,824,346,295,083	\$2,285,877,145,126	\$5,563,645,818,255
2015SEP14	1,540,945	\$3,832,582,075,526	\$2,303,249,045,077	\$5,579,877,046,278

## USA National Nonprofit No of EO by Month for 2014 & 2015



## 2) USA State Nonprofit EO Financial Historical Summary by State for 2015 as of 9/14/2015

STATE	Post Month	No of EO	Income Amount	Revenue Amount	Asset Amount
AK	2015FEB09	5,013	\$6,226,157,766	\$5,053,711,496	\$11,652,531,359
AK	2015MAR10	4,993	\$6,460,120,877	\$5,281,836,462	\$11,848,384,325
AK	2015APR16	5,053	\$6,454,886,500	\$5,277,246,957	\$11,878,735,262
AK	2015MAY11	5,098	\$6,489,284,729	\$5,307,665,790	\$12,024,854,525
AK	2015JUN08	5,095	\$6,437,325,829	\$5,237,819,395	\$12,215,027,904
AK	2015JUL13	5,140	\$6,590,034,986	\$5,310,300,744	\$12,276,456,200
AK	2015AUG10	5,115	\$6,776,196,743	\$5,497,467,054	\$12,506,262,679
AK	2015SEP14	5,105	\$7,230,869,882	\$5,739,096,447	\$12,925,526,403
AL	2015FEB09	19,530	\$16,736,540,124	\$12,366,819,546	\$38,001,007,309
AL	2015MAR10	19,489	\$17,960,029,009	\$13,444,513,521	\$39,949,241,216
AL	2015APR16	19,631	\$17,949,840,325	\$13,441,626,319	\$40,001,594,172
AL	2015MAY11	19,860	\$17,388,568,679	\$13,315,503,130	\$39,792,281,066
AL	2015JUN08	19,985	\$17,424,506,192	\$13,409,228,426	\$39,961,908,129
AL	2015JUL13	20,051	\$17,523,939,839	\$13,411,422,873	\$40,004,856,875
AL	2015AUG10	19,860	\$18,487,685,865	\$14,239,191,518	\$41,800,894,148
AL	2015SEP14	19,957	\$17,747,971,690	\$13,688,078,160	\$40,613,230,971
AR	2015FEB09	12,918	\$18,245,619,165	\$14,849,276,240	\$22,298,065,753
AR	2015MAR10	12,874	\$18,347,069,815	\$14,901,348,319	\$22,395,901,044
AR	2015APR16	13,033	\$18,438,736,846	\$14,965,259,086	\$22,564,198,801
AR	2015MAY11	13,252	\$18,416,921,782	\$14,955,230,451	\$22,584,809,167
AR	2015JUN08	13,322	\$19,635,992,502	\$16,067,080,798	\$23,730,571,309
AR	2015JUL13	13,403	\$19,434,257,415	\$15,878,150,495	\$23,798,002,763
AR	2015AUG10	13,272	\$19,394,115,488	\$15,852,776,681	\$23,829,302,651
AR	2015SEP14	13,318	\$19,402,927,345	\$15,856,011,262	\$23,902,921,894
AZ	2015FEB09	21,350	\$38,730,141,582	\$27,241,662,231	\$52,444,031,941
AZ	2015MAR10	21,307	\$39,145,617,450	\$27,522,726,610	\$53,819,029,275
AZ	2015APR16	21,664	\$39,298,756,075	\$27,615,652,195	\$53,998,477,628
AZ	2015MAY11	21,807	\$39,554,771,451	\$27,966,043,898	\$53,741,888,527
AZ	2015JUN08	21,919	\$39,876,520,359	\$28,240,646,333	\$53,883,546,220
AZ	2015JUL13	22,059	\$39,843,157,755	\$28,283,177,543	\$53,944,090,309
AZ	2015AUG10	21,948	\$40,279,978,894	\$28,732,626,402	\$54,295,949,688
AZ	2015SEP14	22,015	\$39,359,203,522	\$27,802,700,595	\$53,598,314,236
CA	2015FEB09	155,800	\$393,922,000,416	\$256,626,362,658	\$628,106,642,141
CA	2015MAR10	155,482	\$313,773,446,471	\$204,483,602,223	\$610,084,040,030
CA	2015APR16	157,286	\$313,117,633,375	\$204,950,315,202	\$610,616,967,076

CA	2015MAY11	158,243	\$314,845,758,224	\$206,637,374,945	\$612,035,859,714
CA	2015JUN08	158,840	\$385,541,782,544	\$251,819,390,128	\$637,953,784,443
CA	2015JUL13	159,738	\$316,339,560,623	\$208,189,565,541	\$616,734,615,622
CA	2015AUG10	158,668	\$401,669,825,063	\$261,808,124,671	\$645,171,252,238
CA	2015SEP14	159,246	\$293,800,183,273	\$204,428,547,434	\$593,457,050,643
CO	2015FEB09	27,737	\$35,612,642,652	\$28,231,736,895	\$65,310,229,208
CO	2015MAR10	27,720	\$35,900,078,607	\$29,267,277,839	\$65,776,731,365
CO	2015APR16	27,994	\$36,157,258,342	\$29,529,497,563	\$66,072,964,621
CO	2015MAY11	28,189	\$36,306,215,026	\$29,646,588,263	\$66,190,411,489
CO	2015JUN08	28,290	\$37,331,338,042	\$30,491,873,195	\$69,258,567,440
CO	2015JUL13	28,425	\$37,210,636,834	\$30,452,091,002	\$69,131,580,498
CO	2015AUG10	28,170	\$36,919,613,829	\$30,047,149,203	\$69,112,822,435
CO	2015SEP14	28,806	\$36,889,279,684	\$29,866,160,177	\$68,930,629,882
CT	2015FEB09	19,699	\$56,750,280,151	\$35,007,592,559	\$113,337,977,627
CT	2015MAR10	19,645	\$52,205,633,744	\$33,014,050,695	\$94,268,593,327
CT	2015APR16	19,803	\$51,902,201,384	\$32,754,405,859	\$93,871,969,655
CT	2015MAY11	19,851	\$51,817,760,940	\$32,713,892,110	\$94,046,292,865
CT	2015JUN08	19,936	\$49,666,707,562	\$34,205,552,389	\$95,971,330,629
CT	2015JUL13	20,018	\$49,616,283,027	\$34,159,285,552	\$95,925,228,848
CT	2015AUG10	19,939	\$50,144,867,563	\$34,249,925,849	\$96,096,908,195
CT	2015SEP14	19,980	\$50,431,531,493	\$34,771,096,456	\$99,060,881,680
DC	2015FEB09	12,866	\$90,342,305,503	\$47,214,121,917	\$77,725,280,804
DC	2015MAR10	12,815	\$94,722,982,650	\$48,548,068,264	\$89,319,072,930
DC	2015APR16	12,918	\$96,243,963,915	\$49,659,089,457	\$89,605,322,183
DC	2015MAY11	12,962	\$95,617,554,979	\$49,429,919,993	\$87,913,844,897
DC	2015JUN08	13,012	\$94,541,178,461	\$48,539,660,155	\$87,523,632,571
DC	2015JUL13	13,083	\$95,766,740,163	\$49,664,616,884	\$89,520,184,089
DC	2015AUG10	12,984	\$94,677,463,201	\$48,254,749,612	\$89,847,365,863
DC	2015SEP14	13,039	\$95,668,206,394	\$48,901,536,897	\$90,443,378,785
DE	2015FEB09	6,083	\$13,247,202,052	\$6,985,354,490	\$21,523,914,342
DE	2015MAR10	6,071	\$13,211,165,214	\$7,035,163,151	\$21,533,520,100
DE	2015APR16	6,124	\$13,114,421,234	\$7,027,171,942	\$21,603,635,921
DE	2015MAY11	6,157	\$13,125,243,293	\$7,040,755,488	\$21,694,930,728
DE	2015JUN08	6,206	\$13,590,120,621	\$7,433,531,740	\$23,031,601,118
DE	2015JUL13	6,251	\$13,526,026,389	\$7,424,167,199	\$22,800,708,765
DE	2015AUG10	6,233	\$13,668,697,601	\$7,500,363,870	\$23,054,999,016
DE	2015SEP14	6,285	\$13,516,285,404	\$7,484,173,594	\$22,959,650,082
FL	2015FEB09	76,281	\$111,696,767,088	\$79,729,410,401	\$182,914,177,563
FL	2015MAR10	76,205	\$112,315,863,026	\$80,341,418,417	\$183,316,938,565
FL	2015APR16	77,136	\$112,634,271,820	\$80,693,083,699	\$183,957,335,488
FL	2015MAY11	77,811	\$111,916,784,452	\$80,723,209,468	\$185,115,036,509

FL	2015JUN08	78,224	\$113,083,833,555	\$81,443,930,832	\$187,455,367,844
FL	2015JUL13	78,881	\$113,208,847,167	\$81,292,498,571	\$187,910,391,254
FL	2015AUG10	78,251	\$113,827,156,479	\$81,019,198,796	\$187,502,158,425
FL	2015SEP14	78,590	\$114,796,252,145	\$81,760,748,027	\$190,105,260,872
GA	2015FEB09	41,030	\$68,331,029,633	\$56,476,501,528	\$125,622,672,116
GA	2015MAR10	41,041	\$68,869,727,495	\$56,651,811,474	\$128,633,881,124
GA	2015APR16	41,648	\$68,867,981,037	\$56,569,234,779	\$128,796,649,266
GA	2015MAY11	42,045	\$69,215,734,289	\$56,850,401,855	\$129,859,050,451
GA	2015JUN08	42,309	\$69,159,274,130	\$57,656,913,817	\$132,745,649,673
GA	2015JUL13	42,568	\$67,209,828,274	\$55,938,545,019	\$129,605,379,336
GA	2015AUG10	42,168	\$67,539,484,559	\$56,178,433,044	\$130,335,884,395
GA	2015SEP14	42,313	\$66,300,742,978	\$53,993,418,587	\$120,856,155,505
HI	2015FEB09	7,312	\$16,006,616,774	\$7,457,879,569	\$23,148,133,051
HI	2015MAR10	7,304	\$16,011,723,801	\$7,424,317,083	\$23,130,413,036
HI	2015APR16	7,355	\$16,187,621,633	\$7,548,191,466	\$23,337,870,971
HI	2015MAY11	7,403	\$16,181,497,857	\$7,542,361,927	\$23,308,827,637
HI	2015JUN08	7,441	\$15,648,225,455	\$8,075,442,872	\$25,235,173,305
HI	2015JUL13	7,453	\$15,753,802,279	\$8,077,871,841	\$25,684,554,219
HI	2015AUG10	7,384	\$15,819,890,396	\$8,107,213,181	\$25,814,734,491
HI	2015SEP14	7,412	\$17,200,264,537	\$8,158,999,014	\$25,911,765,983
IA	2015FEB09	27,220	\$22,860,640,586	\$18,123,468,353	\$41,622,221,275
IA	2015MAR10	27,182	\$23,147,327,414	\$18,219,883,173	\$42,026,139,179
IA	2015APR16	27,323	\$23,992,455,875	\$18,549,087,298	\$44,663,736,898
IA	2015MAY11	27,356	\$24,047,894,435	\$18,603,017,755	\$44,876,225,449
IA	2015JUN08	27,430	\$25,110,421,300	\$19,462,720,903	\$45,693,271,405
IA	2015JUL13	27,506	\$24,929,487,325	\$19,339,866,559	\$45,729,568,830
IA	2015AUG10	27,410	\$25,030,737,066	\$19,447,433,274	\$45,735,888,328
IA	2015SEP14	27,452	\$24,312,894,683	\$18,851,227,102	\$45,043,187,687
ID	2015FEB09	7,505	\$6,862,631,629	\$4,912,218,425	\$9,028,603,407
ID	2015MAR10	7,474	\$6,908,362,120	\$4,966,241,045	\$9,048,205,204
ID	2015APR16	7,550	\$6,936,490,398	\$5,013,448,862	\$9,169,510,713
ID	2015MAY11	7,616	\$6,953,401,289	\$5,030,388,550	\$9,191,967,117
ID	2015JUN08	7,656	\$6,922,510,747	\$4,989,592,946	\$9,188,859,684
ID	2015JUL13	7,632	\$7,014,061,289	\$5,077,387,417	\$9,276,811,292
ID	2015AUG10	7,578	\$7,035,875,081	\$5,094,852,727	\$9,301,340,557
ID	2015SEP14	7,600	\$7,123,284,663	\$5,302,395,038	\$9,515,612,443
IL	2015FEB09	64,136	\$192,237,831,901	\$97,932,453,774	\$273,341,787,182
IL	2015MAR10	63,962	\$194,463,305,459	\$98,967,376,057	\$277,416,214,446
IL	2015APR16	64,546	\$195,403,661,525	\$99,006,027,246	\$280,350,971,931
IL	2015MAY11	64,775	\$196,338,337,135	\$99,350,196,998	\$280,045,917,622
IL	2015JUN08	64,873	\$198,527,029,642	\$101,660,565,417	\$283,933,425,146

IL	2015JUL13	65,087	\$197,900,783,105	\$100,295,913,294	\$282,674,485,039
IL	2015AUG10	64,691	\$197,530,975,239	\$100,821,938,416	\$285,633,937,725
IL	2015SEP14	64,820	\$195,587,561,732	\$100,925,364,202	\$284,972,984,192
IN	2015FEB09	35,609	\$60,660,937,095	\$41,943,535,414	\$106,648,800,776
IN	2015MAR10	35,549	\$61,573,959,452	\$41,952,958,274	\$108,782,173,381
IN	2015APR16	35,910	\$60,490,848,262	\$41,980,355,674	\$107,761,311,443
IN	2015MAY11	35,848	\$59,629,519,267	\$41,205,867,605	\$106,905,406,879
IN	2015JUN08	35,956	\$56,776,127,769	\$41,472,414,611	\$112,255,499,236
IN	2015JUL13	36,083	\$56,832,428,132	\$41,559,900,542	\$111,546,547,873
IN	2015AUG10	35,721	\$54,369,504,067	\$40,184,188,835	\$101,735,050,193
IN	2015SEP14	35,840	\$58,184,665,656	\$42,007,828,409	\$113,448,966,746
KS	2015FEB09	16,109	\$16,629,365,851	\$13,040,145,465	\$31,606,859,803
KS	2015MAR10	16,075	\$16,393,360,130	\$12,769,522,405	\$31,372,656,658
KS	2015APR16	16,218	\$16,576,502,826	\$12,798,084,650	\$31,042,046,372
KS	2015MAY11	16,247	\$16,342,676,148	\$12,561,624,338	\$30,836,643,764
KS	2015JUN08	16,282	\$16,913,147,651	\$13,066,884,819	\$31,786,044,209
KS	2015JUL13	16,322	\$16,989,427,180	\$13,109,477,046	\$32,564,571,521
KS	2015AUG10	16,267	\$17,017,668,461	\$13,181,306,539	\$32,690,514,633
KS	2015SEP14	16,284	\$17,283,575,714	\$13,450,450,353	\$33,125,410,583
KY	2015FEB09	18,020	\$32,944,850,012	\$24,548,839,450	\$43,120,145,152
KY	2015MAR10	17,969	\$32,708,290,802	\$24,722,983,915	\$43,479,101,436
KY	2015APR16	18,130	\$32,934,428,595	\$24,681,856,077	\$43,839,837,450
KY	2015MAY11	18,253	\$33,005,907,562	\$24,781,528,557	\$43,926,308,112
KY	2015JUN08	18,323	\$33,089,972,507	\$25,070,275,807	\$44,489,965,585
KY	2015JUL13	18,418	\$32,650,692,105	\$24,861,670,622	\$43,982,926,839
KY	2015AUG10	18,250	\$33,927,750,398	\$25,099,082,485	\$43,922,667,167
KY	2015SEP14	18,309	\$34,236,614,031	\$25,390,312,029	\$44,259,048,752
LA	2015FEB09	18,246	\$24,492,661,916	\$20,492,390,020	\$34,530,073,673
LA	2015MAR10	18,233	\$24,554,016,596	\$20,507,362,464	\$34,647,621,332
LA	2015APR16	18,407	\$24,493,139,325	\$20,542,614,813	\$34,915,667,562
LA	2015MAY11	18,600	\$24,504,477,591	\$20,537,127,188	\$35,037,293,549
LA	2015JUN08	18,680	\$24,902,670,620	\$20,997,729,961	\$35,692,802,882
LA	2015JUL13	18,777	\$25,709,105,399	\$20,990,547,179	\$35,592,673,642
LA	2015AUG10	18,574	\$25,748,181,476	\$21,024,170,331	\$35,570,554,447
LA	2015SEP14	18,653	\$26,686,913,286	\$21,877,522,016	\$36,122,456,811
MA	2015FEB09	36,026	\$248,191,151,458	\$130,979,754,269	\$295,583,619,124
MA	2015MAR10	35,963	\$249,048,756,023	\$131,419,849,367	\$296,773,169,300
MA	2015APR16	36,307	\$249,762,854,351	\$131,529,484,621	\$297,010,381,070
MA	2015MAY11	36,444	\$248,458,901,568	\$129,911,916,744	\$296,935,874,090
MA	2015JUN08	36,583	\$283,200,010,348	\$140,317,611,970	\$319,784,498,523
MA	2015JUL13	36,773	\$279,774,480,116	\$139,779,368,328	\$308,095,202,831

MA	2015AUG10	36,595	\$290,914,898,390	\$144,576,704,519	\$323,967,984,793
MA	2015SEP14	36,689	\$291,544,133,913	\$144,757,045,824	\$326,470,214,312
MD	2015FEB09	31,973	\$107,908,051,112	\$50,140,257,734	\$125,544,911,725
MD	2015MAR10	31,946	\$108,517,535,618	\$50,730,607,499	\$125,582,341,970
MD	2015APR16	32,258	\$109,077,583,214	\$51,243,702,264	\$126,363,344,059
MD	2015MAY11	32,388	\$127,809,402,979	\$51,863,997,602	\$128,639,649,599
MD	2015JUN08	32,492	\$120,040,648,782	\$46,019,152,350	\$120,077,905,579
MD	2015JUL13	32,731	\$128,630,308,345	\$52,205,141,434	\$128,801,530,433
MD	2015AUG10	32,433	\$129,200,690,830	\$52,689,122,757	\$129,932,509,369
MD	2015SEP14	32,575	\$132,432,452,213	\$55,496,699,629	\$130,807,182,014
ME	2015FEB09	8,863	\$15,130,513,943	\$11,295,668,152	\$20,892,018,534
ME	2015MAR10	8,838	\$14,850,970,149	\$11,073,859,421	\$20,414,637,716
ME	2015APR16	8,909	\$14,860,229,470	\$11,077,289,765	\$20,509,489,104
ME	2015MAY11	8,991	\$14,794,436,478	\$11,093,262,084	\$20,431,923,998
ME	2015JUN08	9,028	\$14,732,212,411	\$11,234,657,871	\$20,912,350,814
ME	2015JUL13	9,025	\$15,194,653,612	\$11,491,920,409	\$21,525,283,203
ME	2015AUG10	8,968	\$15,196,519,761	\$11,503,585,101	\$21,653,850,130
ME	2015SEP14	8,982	\$15,923,230,398	\$12,023,261,734	\$21,975,795,229
MI	2015FEB09	46,149	\$314,859,977,224	\$72,029,706,786	\$213,186,846,330
MI	2015MAR10	46,110	\$316,251,754,280	\$72,490,935,483	\$220,414,550,112
MI	2015APR16	46,580	\$319,116,933,033	\$75,225,280,854	\$224,930,570,427
MI	2015MAY11	46,677	\$319,391,522,853	\$75,093,121,542	\$225,136,379,438
MI	2015JUN08	47,017	\$319,686,648,093	\$75,298,067,126	\$231,987,718,983
MI	2015JUL13	47,187	\$316,072,541,540	\$72,259,085,137	\$226,659,551,733
MI	2015AUG10	46,822	\$316,417,467,397	\$72,424,842,120	\$227,234,661,698
MI	2015SEP14	46,976	\$317,749,783,805	\$73,512,437,525	\$229,007,819,015
MN	2015FEB09	33,282	\$91,672,961,607	\$55,563,767,252	\$107,637,312,115
MN	2015MAR10	33,179	\$139,517,952,960	\$69,250,662,932	\$189,661,293,231
MN	2015APR16	33,493	\$137,778,026,818	\$68,160,239,123	\$188,548,819,471
MN	2015MAY11	33,638	\$137,195,725,264	\$67,928,451,649	\$188,347,864,195
MN	2015JUN08	33,617	\$137,048,362,990	\$68,047,324,520	\$189,511,448,965
MN	2015JUL13	33,747	\$137,190,684,999	\$67,835,587,057	\$189,083,051,499
MN	2015AUG10	33,568	\$136,826,764,819	\$67,533,402,807	\$190,029,312,691
MN	2015SEP14	33,655	\$134,113,097,114	\$68,512,176,562	\$190,874,410,369
MO	2015FEB09	33,460	\$66,991,212,170	\$48,602,058,159	\$99,159,289,944
MO	2015MAR10	33,344	\$67,269,499,752	\$49,119,640,255	\$103,458,931,767
MO	2015APR16	33,989	\$66,631,770,793	\$48,420,712,007	\$102,954,649,637
MO	2015MAY11	34,112	\$66,713,579,499	\$48,492,479,621	\$103,202,900,750
MO	2015JUN08	34,128	\$65,502,175,558	\$47,278,698,787	\$102,798,505,674
MO	2015JUL13	34,146	\$66,017,457,924	\$47,813,498,324	\$102,987,454,034
MO	2015AUG10	33,879	\$66,291,111,867	\$48,012,715,797	\$103,287,338,948



MO	2015SEP14	33,893	\$66,966,325,632	\$48,228,411,145	\$103,361,428,261
MS	2015FEB09	12,629	\$11,714,159,287	\$9,554,554,813	\$20,444,908,781
MS	2015MAR10	12,598	\$11,645,789,757	\$9,522,971,705	\$20,348,714,132
MS	2015APR16	12,712	\$11,575,992,988	\$9,490,639,887	\$20,340,679,784
MS	2015MAY11	12,826	\$11,481,325,185	\$9,412,506,191	\$19,719,595,710
MS	2015JUN08	12,860	\$11,193,482,117	\$9,103,324,440	\$19,782,238,589
MS	2015JUL13	12,911	\$11,338,766,359	\$9,235,765,225	\$19,861,221,055
MS	2015AUG10	12,807	\$11,838,868,939	\$9,723,572,523	\$20,620,759,801
MS	2015SEP14	12,849	\$11,939,393,542	\$9,892,797,533	\$20,702,992,673
MT	2015FEB09	9,864	\$8,619,692,739	\$6,569,459,976	\$13,196,180,844
MT	2015MAR10	9,840	\$8,114,408,351	\$6,016,586,708	\$12,663,102,972
MT	2015APR16	9,900	\$8,112,107,949	\$6,028,351,078	\$12,683,193,594
MT	2015MAY11	9,964	\$8,126,241,172	\$6,051,787,550	\$12,749,826,188
MT	2015JUN08	10,001	\$8,237,598,845	\$6,162,072,264	\$13,011,237,840
MT	2015JUL13	10,013	\$8,269,949,281	\$6,178,434,457	\$13,224,195,555
MT	2015AUG10	9,992	\$8,872,629,572	\$6,783,509,881	\$13,820,493,444
MT	2015SEP14	10,006	\$8,922,927,046	\$6,831,974,509	\$13,886,610,421
NC	2015FEB09	44,926	\$63,984,723,718	\$48,972,521,523	\$115,406,192,078
NC	2015MAR10	44,818	\$66,079,756,813	\$50,972,727,095	\$117,893,694,560
NC	2015APR16	45,314	\$63,631,030,591	\$48,493,131,241	\$111,920,383,960
NC	2015MAY11	45,539	\$68,490,721,083	\$51,114,160,352	\$118,560,226,113
NC	2015JUN08	45,702	\$70,108,331,541	\$52,637,013,048	\$117,064,189,305
NC	2015JUL13	45,979	\$66,372,118,911	\$49,031,754,468	\$112,191,551,810
NC	2015AUG10	45,661	\$72,320,428,457	\$49,988,352,689	\$124,253,820,603
NC	2015SEP14	45,871	\$82,389,824,265	\$51,807,255,482	\$135,204,793,562
ND	2015FEB09	5,541	\$9,757,007,190	\$8,714,284,242	\$14,779,114,626
ND	2015MAR10	5,532	\$9,796,533,418	\$8,740,653,575	\$14,804,251,418
ND	2015APR16	5,584	\$9,801,327,705	\$8,745,034,473	\$14,824,584,891
ND	2015MAY11	5,551	\$9,838,687,362	\$8,764,812,074	\$14,879,198,261
ND	2015JUN08	5,554	\$10,295,663,587	\$9,200,563,765	\$14,447,514,995
ND	2015JUL13	5,563	\$10,231,576,167	\$9,207,839,539	\$14,476,711,128
ND	2015AUG10	5,541	\$10,241,227,658	\$9,215,803,190	\$14,512,139,801
ND	2015SEP14	5,556	\$10,223,233,106	\$9,275,562,789	\$14,645,880,693
NE	2015FEB09	12,379	\$19,464,483,379	\$13,811,431,064	\$39,838,485,128
NE	2015MAR10	12,362	\$18,752,071,136	\$13,298,418,096	\$40,241,390,426
NE	2015APR16	12,452	\$19,146,772,971	\$13,218,925,461	\$40,783,067,182
NE	2015MAY11	13,135	\$19,503,353,074	\$13,534,708,722	\$41,662,814,636
NE	2015JUN08	13,291	\$20,205,866,110	\$13,985,636,009	\$43,111,165,882
NE	2015JUL13	13,328	\$19,724,737,056	\$13,894,268,027	\$42,760,759,812
NE	2015AUG10	13,270	\$19,876,206,082	\$13,993,739,519	\$42,948,079,116
NE	2015SEP14	13,298	\$19,716,500,432	\$14,019,589,747	\$43,056,444,103

NH	2015FEB09	7,976	\$19,981,156,375	\$10,779,790,369	\$30,948,720,205
NH	2015MAR10	7,956	\$20,365,574,334	\$11,190,709,153	\$31,005,511,000
NH	2015APR16	8,036	\$20,387,734,099	\$11,206,134,425	\$30,958,009,888
NH	2015MAY11	8,052	\$20,216,499,919	\$11,116,633,236	\$30,938,926,085
NH	2015JUN08	8,083	\$20,161,273,763	\$11,377,434,923	\$31,370,664,042
NH	2015JUL13	8,067	\$14,507,139,904	\$10,081,360,047	\$25,162,423,622
NH	2015AUG10	8,003	\$14,538,186,832	\$10,099,829,780	\$25,235,491,422
NH	2015SEP14	8,028	\$19,802,573,218	\$11,530,057,706	\$32,407,703,411
NJ	2015FEB09	41,557	\$72,688,517,372	\$47,544,337,791	\$119,072,837,787
NJ	2015MAR10	41,529	\$71,641,400,394	\$46,550,452,692	\$118,890,172,173
NJ	2015APR16	41,659	\$71,392,364,422	\$46,452,360,655	\$119,409,267,340
NJ	2015MAY11	41,804	\$71,662,449,458	\$46,466,191,002	\$119,135,786,885
NJ	2015JUN08	42,298	\$72,750,139,908	\$47,497,285,692	\$120,717,938,344
NJ	2015JUL13	41,981	\$67,410,100,507	\$47,108,594,496	\$98,512,494,619
NJ	2015AUG10	41,615	\$68,178,238,309	\$48,181,902,798	\$98,657,376,512
NJ	2015SEP14	41,801	\$70,439,678,463	\$49,258,715,050	\$124,334,205,262
NM	2015FEB09	9,761	\$7,702,432,931	\$6,135,566,440	\$15,334,961,923
NM	2015MAR10	9,724	\$7,720,646,236	\$6,131,264,243	\$15,378,526,268
NM	2015APR16	9,807	\$7,754,048,336	\$6,157,822,749	\$15,405,637,132
NM	2015MAY11	9,874	\$7,797,694,591	\$6,203,297,598	\$15,472,406,116
NM	2015JUN08	9,903	\$7,779,986,724	\$6,168,772,901	\$15,456,833,970
NM	2015JUL13	9,936	\$7,740,315,632	\$6,127,409,963	\$15,309,793,129
NM	2015AUG10	9,852	\$7,884,071,551	\$6,191,834,933	\$15,564,107,821
NM	2015SEP14	9,888	\$7,972,195,242	\$6,239,551,654	\$15,640,286,029
NV	2015FEB09	8,134	\$7,803,147,244	\$4,660,015,052	\$14,028,390,416
NV	2015MAR10	8,093	\$7,705,983,797	\$4,609,907,032	\$13,911,555,346
NV	2015APR16	8,224	\$7,677,593,251	\$4,706,050,070	\$13,934,617,872
NV	2015MAY11	8,290	\$7,803,440,816	\$4,796,282,928	\$14,456,338,782
NV	2015JUN08	8,324	\$7,603,195,477	\$4,646,750,364	\$14,922,669,623
NV	2015JUL13	8,370	\$7,536,588,754	\$4,573,468,097	\$14,249,952,829
NV	2015AUG10	8,305	\$7,634,785,893	\$4,631,169,398	\$14,516,780,467
NV	2015SEP14	8,361	\$7,675,074,281	\$4,623,430,177	\$14,596,934,151
NY	2015FEB09	97,651	\$338,678,090,324	\$229,639,536,787	\$477,200,344,936
NY	2015MAR10	97,530	\$342,603,424,493	\$232,530,451,376	\$489,386,961,250
NY	2015APR16	98,575	\$342,570,684,184	\$231,083,599,737	\$483,884,961,940
NY	2015MAY11	98,864	\$344,510,561,920	\$232,202,901,038	\$486,464,034,374
NY	2015JUN08	99,266	\$349,591,997,151	\$237,403,837,423	\$493,661,072,456
NY	2015JUL13	99,806	\$348,426,566,541	\$234,893,102,268	\$497,393,986,450
NY	2015AUG10	99,383	\$352,461,586,275	\$237,288,359,173	\$504,077,892,528
NY	2015SEP14	99,688	\$354,100,618,634	\$239,034,352,202	\$504,837,657,413
OH	2015FEB09	63,178	\$131,903,546,812	\$95,266,494,586	\$187,818,678,847

OH	2015MAR10	63,066	\$132,523,165,198	\$95,651,002,738	\$195,185,752,486
OH	2015APR16	63,575	\$133,629,847,000	\$96,165,558,655	\$195,483,675,387
OH	2015MAY11	63,738	\$133,555,795,429	\$96,252,362,435	\$192,868,155,103
OH	2015JUN08	63,823	\$135,325,976,144	\$97,278,217,598	\$195,671,972,861
OH	2015JUL13	63,257	\$127,457,421,500	\$94,529,076,504	\$190,131,569,033
OH	2015AUG10	62,631	\$137,122,060,566	\$97,079,940,369	\$196,407,313,949
OH	2015SEP14	62,871	\$137,137,340,621	\$96,835,255,705	\$196,231,463,270
OK	2015FEB09	17,846	\$21,837,511,939	\$12,671,220,728	\$43,677,029,605
OK	2015MAR10	17,819	\$22,172,699,646	\$12,901,280,870	\$45,529,708,932
OK	2015APR16	17,987	\$22,111,492,942	\$12,826,460,416	\$45,612,063,341
OK	2015MAY11	18,254	\$22,071,731,482	\$12,704,578,668	\$43,890,782,681
OK	2015JUN08	18,309	\$22,953,992,013	\$14,061,483,450	\$47,170,184,814
OK	2015JUL13	18,422	\$22,933,421,809	\$13,481,879,814	\$47,412,922,354
OK	2015AUG10	18,310	\$23,746,696,712	\$14,080,741,260	\$47,963,069,313
OK	2015SEP14	18,364	\$23,465,450,106	\$14,055,763,550	\$47,768,307,679
OR	2015FEB09	22,326	\$55,375,998,963	\$40,377,732,570	\$85,658,577,442
OR	2015MAR10	22,287	\$133,563,992,455	\$92,837,292,744	\$106,016,280,521
OR	2015APR16	22,486	\$133,482,450,952	\$93,005,444,326	\$105,247,977,287
OR	2015MAY11	22,621	\$133,502,284,213	\$93,046,475,629	\$105,379,876,373
OR	2015JUN08	22,616	\$67,452,506,490	\$51,102,603,454	\$90,148,886,619
OR	2015JUL13	22,687	\$133,935,045,143	\$93,183,131,364	\$106,060,201,741
OR	2015AUG10	22,613	\$55,803,830,567	\$40,816,252,211	\$85,218,890,059
OR	2015SEP14	22,670	\$134,471,717,498	\$93,637,058,328	\$106,884,412,339
PA	2015FEB09	65,354	\$192,685,576,982	\$112,059,908,558	\$285,944,934,995
PA	2015MAR10	65,202	\$192,408,308,635	\$112,081,398,641	\$284,645,243,073
PA	2015APR16	65,949	\$191,997,773,032	\$113,559,729,421	\$288,084,525,006
PA	2015MAY11	66,151	\$188,866,294,366	\$113,497,831,481	\$289,203,490,751
PA	2015JUN08	66,350	\$194,193,394,353	\$124,441,046,803	\$299,707,979,069
PA	2015JUL13	66,710	\$192,062,495,863	\$123,699,097,099	\$299,617,828,393
PA	2015AUG10	66,455	\$195,386,364,867	\$123,502,870,170	\$304,914,998,392
PA	2015SEP14	66,646	\$198,202,268,081	\$124,140,286,848	\$309,462,285,985
RI	2015FEB09	8,017	\$21,592,253,808	\$11,701,837,904	\$30,774,932,545
RI	2015MAR10	7,997	\$21,465,481,555	\$11,719,749,528	\$30,633,162,277
RI	2015APR16	8,030	\$21,502,918,923	\$11,721,930,632	\$30,710,816,689
RI	2015MAY11	8,044	\$21,551,337,641	\$11,822,519,959	\$30,864,275,493
RI	2015JUN08	7,968	\$21,965,278,872	\$12,041,585,940	\$31,271,960,977
RI	2015JUL13	7,930	\$22,144,895,535	\$12,071,528,031	\$31,576,074,113
RI	2015AUG10	7,875	\$22,054,144,213	\$12,101,045,784	\$31,541,446,787
RI	2015SEP14	7,876	\$20,777,306,692	\$12,228,194,660	\$31,792,720,272
SC	2015FEB09	23,393	\$18,924,116,393	\$16,410,706,270	\$36,265,716,836
SC	2015MAR10	23,349	\$19,055,948,844	\$16,368,162,476	\$36,026,071,894

SC	2015APR16	23,582	\$19,110,417,215	\$16,408,767,193	\$36,107,024,538
SC	2015MAY11	23,698	\$19,132,904,090	\$16,465,331,818	\$36,188,402,765
SC	2015JUN08	23,802	\$19,066,566,418	\$16,532,955,686	\$36,503,497,107
SC	2015JUL13	23,900	\$18,982,507,347	\$16,403,976,131	\$36,255,297,838
SC	2015AUG10	23,775	\$19,101,890,839	\$16,527,265,725	\$36,388,060,704
SC	2015SEP14	23,852	\$21,366,540,045	\$17,236,197,587	\$37,044,012,696
SD	2015FEB09	6,307	\$7,173,369,320	\$5,910,021,233	\$13,671,139,113
SD	2015MAR10	6,293	\$7,182,801,579	\$5,929,794,026	\$13,716,171,316
SD	2015APR16	6,345	\$7,154,141,382	\$5,911,609,144	\$13,725,248,711
SD	2015MAY11	6,366	\$7,182,879,601	\$5,922,911,702	\$13,766,343,901
SD	2015JUN08	6,366	\$7,398,975,891	\$6,041,042,812	\$14,277,956,127
SD	2015JUL13	6,297	\$7,445,615,660	\$6,057,944,036	\$14,317,373,907
SD	2015AUG10	6,255	\$7,403,522,186	\$6,031,003,303	\$14,386,649,384
SD	2015SEP14	6,281	\$7,517,781,038	\$6,138,442,359	\$14,503,956,664
TN	2015FEB09	29,753	\$51,458,252,866	\$34,527,868,083	\$78,512,437,475
TN	2015MAR10	29,697	\$51,492,686,543	\$34,582,036,133	\$78,709,468,479
TN	2015APR16	29,946	\$51,590,708,434	\$34,748,299,779	\$79,651,625,618
TN	2015MAY11	30,185	\$51,592,577,142	\$34,781,471,888	\$79,864,699,996
TN	2015JUN08	30,282	\$51,273,797,507	\$34,613,671,499	\$78,637,921,978
TN	2015JUL13	30,619	\$51,374,219,521	\$34,635,994,408	\$78,690,765,931
TN	2015AUG10	30,443	\$51,216,760,126	\$34,468,210,914	\$78,277,941,976
TN	2015SEP14	30,524	\$51,703,911,240	\$34,982,899,874	\$79,241,227,078
TX	2015FEB09	102,630	\$162,241,620,057	\$105,997,900,122	\$290,004,281,607
TX	2015MAR10	102,535	\$168,340,099,355	\$107,822,843,258	\$296,488,937,134
TX	2015APR16	103,744	\$168,377,273,492	\$107,950,638,592	\$295,864,018,382
TX	2015MAY11	104,668	\$169,575,708,304	\$109,316,252,671	\$298,266,250,063
TX	2015JUN08	105,346	\$169,891,592,372	\$110,359,417,700	\$303,281,463,735
TX	2015JUL13	106,026	\$161,638,703,964	\$102,647,652,114	\$290,662,718,487
TX	2015AUG10	105,151	\$165,810,331,486	\$106,265,501,478	\$295,149,094,723
TX	2015SEP14	105,686	\$168,888,179,191	\$108,461,781,241	\$302,806,251,046
UT	2015FEB09	8,484	\$16,981,017,227	\$10,665,603,936	\$21,135,263,020
UT	2015MAR10	8,483	\$17,020,226,067	\$10,727,166,201	\$21,202,164,546
UT	2015APR16	8,582	\$16,998,745,250	\$10,780,049,334	\$21,285,555,988
UT	2015MAY11	8,680	\$17,025,793,148	\$10,799,628,227	\$21,300,062,624
UT	2015JUN08	8,700	\$17,147,021,369	\$10,895,794,225	\$21,499,890,445
UT	2015JUL13	8,752	\$17,316,056,694	\$11,022,479,270	\$21,607,377,152
UT	2015AUG10	8,707	\$17,309,859,916	\$11,010,663,657	\$21,633,481,591
UT	2015SEP14	8,762	\$17,384,574,675	\$11,076,054,031	\$21,731,379,273
VA	2015FEB09	40,683	\$82,370,876,411	\$57,645,605,186	\$148,039,253,066
VA	2015MAR10	40,650	\$80,633,513,200	\$56,511,565,401	\$144,919,012,238
VA	2015APR16	41,012	\$81,262,584,843	\$56,885,180,142	\$146,064,903,182

VA	2015MAY11	41,212	\$81,021,429,795	\$56,715,538,621	\$145,811,001,856
VA	2015JUN08	41,352	\$82,422,208,228	\$58,653,498,181	\$149,348,542,891
VA	2015JUL13	41,558	\$82,163,216,491	\$58,273,087,801	\$142,854,340,364
VA	2015AUG10	41,356	\$85,250,548,531	\$60,640,253,179	\$150,567,192,863
VA	2015SEP14	41,471	\$86,621,060,867	\$62,196,419,478	\$152,058,702,914
VT	2015FEB09	5,669	\$7,492,941,292	\$6,005,481,104	\$12,028,450,009
VT	2015MAR10	5,642	\$7,522,757,906	\$6,037,716,103	\$12,060,061,654
VT	2015APR16	5,689	\$7,534,871,821	\$6,046,166,362	\$12,074,500,748
VT	2015MAY11	5,687	\$7,436,457,075	\$6,085,544,009	\$11,890,772,470
VT	2015JUN08	5,691	\$7,568,728,495	\$6,140,102,155	\$12,005,075,491
VT	2015JUL13	5,723	\$7,586,556,864	\$6,153,122,486	\$12,039,720,451
VT	2015AUG10	5,697	\$7,603,648,275	\$6,169,091,665	\$12,062,570,848
VT	2015SEP14	5,710	\$7,448,972,535	\$6,181,364,048	\$12,204,672,200
WA	2015FEB09	34,328	\$133,367,383,792	\$49,507,572,421	\$195,256,024,011
WA	2015MAR10	34,265	\$134,453,789,973	\$50,291,829,292	\$196,706,608,016
WA	2015APR16	34,682	\$133,683,089,417	\$49,977,873,407	\$196,084,083,230
WA	2015MAY11	34,885	\$133,604,530,406	\$49,961,550,605	\$196,311,692,036
WA	2015JUN08	34,884	\$134,767,113,316	\$50,886,882,371	\$197,614,231,815
WA	2015JUL13	35,592	\$134,831,000,763	\$50,708,053,838	\$197,459,813,674
WA	2015AUG10	35,374	\$134,990,241,560	\$50,836,372,766	\$196,540,238,921
WA	2015SEP14	35,532	\$135,479,738,424	\$51,523,318,236	\$197,168,583,983
WI	2015FEB09	32,754	\$58,735,400,960	\$46,208,567,146	\$85,409,032,693
WI	2015MAR10	32,726	\$58,933,268,010	\$46,426,868,633	\$86,005,414,582
WI	2015APR16	33,060	\$59,465,144,209	\$46,993,697,629	\$87,071,701,074
WI	2015MAY11	33,172	\$59,554,614,688	\$47,040,117,956	\$87,233,627,221
WI	2015JUN08	33,601	\$61,357,718,672	\$47,874,250,371	\$88,597,788,590
WI	2015JUL13	33,806	\$61,678,104,054	\$48,066,371,873	\$88,977,150,375
WI	2015AUG10	33,662	\$61,853,731,306	\$48,208,835,864	\$89,304,174,701
WI	2015SEP14	33,742	\$61,967,942,071	\$48,283,375,881	\$89,705,470,792
WV	2015FEB09	9,288	\$10,934,062,691	\$9,275,452,738	\$14,889,343,447
WV	2015MAR10	9,956	\$10,500,930,357	\$8,935,055,015	\$14,853,128,482
WV	2015APR16	10,261	\$10,514,986,351	\$8,934,843,559	\$14,843,781,448
WV	2015MAY11	10,264	\$10,562,637,326	\$8,956,018,021	\$14,888,722,950
WV	2015JUN08	10,276	\$10,353,636,868	\$8,935,044,791	\$14,969,388,108
WV	2015JUL13	10,254	\$10,345,578,413	\$8,934,410,083	\$14,952,836,773
WV	2015AUG10	10,167	\$10,355,916,455	\$8,946,081,678	\$15,034,969,865
WV	2015SEP14	10,208	\$10,408,931,272	\$9,005,129,681	\$14,932,111,545
WY	2015FEB09	4,570	\$3,679,369,039	\$2,040,314,679	\$6,233,885,957
WY	2015MAR10	4,549	\$3,682,964,732	\$2,048,095,828	\$6,256,782,145
WY	2015APR16	4,579	\$3,381,775,358	\$1,915,203,954	\$5,882,175,304
WY	2015MAY11	4,597	\$3,363,658,730	\$1,902,018,249	\$5,857,452,750

WY	2015JUN08	4,597	\$3,366,956,912	\$1,953,473,189	\$5,888,162,192
WY	2015JUL13	4,612	\$3,384,244,870	\$1,951,019,913	\$5,934,629,672
WY	2015AUG10	4,580	\$3,380,043,781	\$1,938,205,590	\$5,929,177,466
WY	2015SEP14	4,592	\$3,307,128,433	\$1,930,495,175	\$5,849,742,686

### 3) Notes

**Data:** IRS EO Data Posted as of September 14, 2015

**Contact:** David Yoo (HanaSoul) via email [dcyoo@cox.net](mailto:dcyoo@cox.net)

Welcome Ideas & Suggestions

**Updates:** Plan to update data and publish ANSA Newsletter periodically as needed.

**International EO:** Not included

**State Directory:** “State Nonprofit Exempt Organization Directory”

Available on request (The directory contains 15 fields; EO Name, EO Tax ID, Contact Name, Address, City, State, ZIP, Exemption Type, Ruling Year, Asset Amount, Income Amount, Revenue Amount, Ruling Year, NTEE Activity Type and NTEE Code).

**Abbreviations:**

“EO” = Tax Exempt Organization (Nonprofit)